

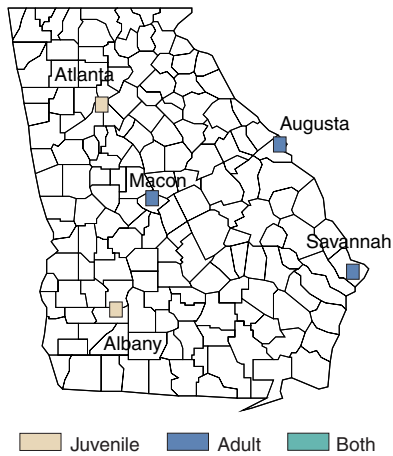
GEORGIA

SVORI Grantees in Georgia

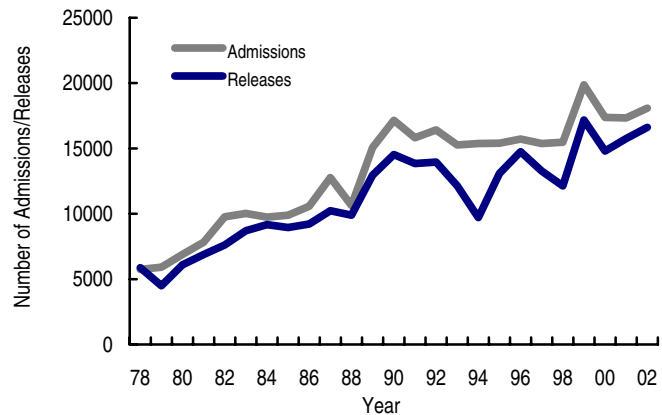
- Georgia Criminal Justice Coordinating Council (GA CJCC)

Georgia has one SVORI grantee focused on juveniles returning to the cities of Albany and Atlanta as well as adults and youthful offenders returning to the cities of Augusta, Macon, and Savannah (depicted in the map below). The line chart below provides BJS statistics on adult prison admission and release trends in Georgia over a 24-year period.

Georgia SVORI Target Areas



Georgia Adult Prison Admissions and Releases, 1978–2002



Source: Correctional Populations in the U.S. (BJS, 2002) and Prison and Jail Inmates at Midyear 2002 and 2003 (Harrison and Karberg, 2004)

SVORI Grantee: Georgia Criminal Justice Coordinating Council

SVORI website	None
Data management system	Adults: Oracle-based information case management system Juveniles: OTIS, a statewide database
Local evaluation planned	Strategic Planning Division will conduct an in-house unit evaluation
Program name	Georgia Reentry Initiative

GA CJCC

Georgia Reentry Initiative

TARGET POPULATION

Population type	Male and female adults and juveniles
Number of targeted prisoners	201+
Inclusion criteria	Adults: ages 25–35, criminal history, considered high risk of offending, and released through transition centers Juveniles: ages 12–17, 6–36-month secure confinement by commitment order, IQ in the normal range, and considered high risk
Exclusion criteria	Sex offenders and severely mentally ill offenders
Pre-release facilities	Selected State prisons
Post-release locations	Augusta, Macon, and Savannah; Albany, Atlanta (for juveniles only)
Participation	Voluntary
Legal release status	Participants are under parole or probation

PROGRAM ORGANIZATION AND SERVICES

Steering committee	Reentry Steering Committee
Post-release reentry authority	State Board of Pardons and Parole and Department of Juvenile Justice
Number of phases	3

Phase 1: Prison

Duration: Unknown

Assessments: Adults: Northpointe COMPASS, ASI, and TABE; Juveniles: MST

Components/services offered within phase:

- Reentry planning begins
- Specific targeted services include, as needed, substance abuse treatment, mental health counseling, medical and dental services, housing needs, life skills training, faith-based services, anger management, and employment skills/vocational training

Coordination of services:

- Juvenile Probation/Parole Specialist

Phase 2: Transition Center

Duration: 6–9 months

Assessments: No specific assessments are used in this phase

Components/services offered within phase:

- Offenders transition from inmates to members of society
- Specific targeted services include, as needed, substance abuse treatment, mental health counseling, medical and dental services, housing needs, life skills training, faith-based services, anger management, and employment skills/vocational training

Coordination of services:

- Transition team made up of treatment providers, Department of Corrections security, counseling and employment staff

Phase 3: Probation/Parole Community

Duration: Unknown

Assessments: Community assessment to identify case management services and gaps

Components/services offered within phase:

- Resources provided for families to be part of the offender's rehabilitation process
- Victims and victim advocacy groups will provide input and guidance to formulate portions of reentry phase
- Specific targeted services include, as needed, substance abuse treatment, mental health counseling, medical and dental services, housing needs, life skills training, faith-based services, anger management, and employment skills/vocational training

Coordination of services:

- Transition team

CHANGES EXPECTED AS A RESULT OF SVORI FUNDING

System-level changes

- Community service providers allowed to come into the institution to meet with offenders
- Integrated case management where representatives from multiple community service providers and/or corrections/supervision agencies meet to discuss and work on particular cases

Individual-level changes

- Reentry planning prior to release tailored to the individual
- Inclusion of family members during reentry planning
- Inclusion of victim during reentry planning