

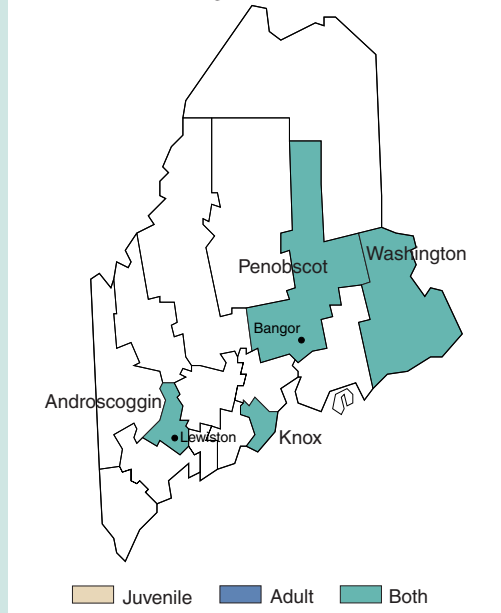
MAINE

SVORI Grantees in Maine

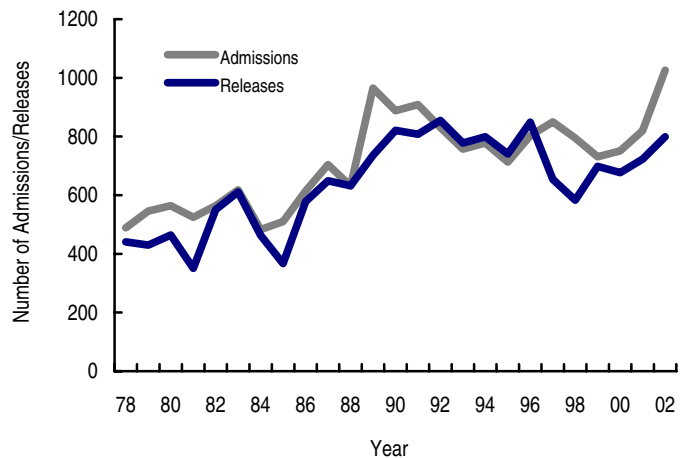
- Maine Department of Corrections (ME DOC)

Maine has one SVORI grantee focused on offenders returning to Androscoggin, Knox, Penobscot, and Washington counties (depicted in the map below), with administratively separate programs for adults and juveniles. The four counties to which participants return were chosen for the following reasons: Penobscot—more urban county in a rural state; Washington—high poverty, very rural and remote; Androscoggin—areas of high poverty, both urban and rural areas, had concerns about sex offenders residing there after release from incarceration; Knox—wanted to participate and contains two work release centers and a State prison. The line chart below provides BJS statistics on adult prison admission and release trends in Maine over a 24-year period.

Maine SVORI Target Areas



Maine Adult Prison Admissions and Releases, 1978–2002



Source: Correctional Populations in the U.S. (BJS, 2002) and Prison and Jail Inmates at Midyear 2002 and 2003 (Harrison and Karberg, 2004)

SVORI Grantee: Maine Department of Corrections

SVORI website	None
Data management system	CORIS Management Information System
Local evaluation planned	Possibly some assistance from Muskie
Program names	Maine Reentry Network–Adult Maine Reentry Network–Juvenile

ME DOC: PROGRAM 1

Maine Reentry Network–Adult

TARGET POPULATION

Population type	Male and female adults and youthful offenders
Number of targeted prisoners	201+
Inclusion criteria	Ages 16–25, categorized as “High Risk” based on LSI/Y-LSI assessment
Exclusion criteria	None
Pre-release facilities	All State prisons
Post-release locations	Androscoggin, Knox, Penobscot, and Washington counties
Participation	Voluntary
Legal release status	Some are under post-release supervision

PROGRAM ORGANIZATION AND SERVICES

Steering committee	Maine Reentry Network Steering Committee
Post-release reentry authority	ME DOC
Number of phases	2

Phase 1: Pre-release

Duration: 6 months

Assessments: LSI-R/Y-LSI assessments, strength-based 12 life domain assessments

Components/services offered within phase:

- Reentry team with institutional, other governmental (including victim advocate), community supervision, family, and community-based organization representatives with an identified lead case manager
- Reentry specialist to assist with networking and brokering services
- Video-conferencing so offenders can meet with community-based organization staff before release, and community mentors are matched with offenders as well
- Strong collaborative of all partners (governmental and community-based organization) for planning and implementation of project
- Specific targeted services include, as needed, mental health and substance abuse treatment, job training, family services and family involvement (e.g., mentoring for children of adult offenders), assistance with MaineCare (Medicaid) application 45 days prior to release, faith-based services, work release programs, and educational assistance

Coordination of services:

- Reentry Team

Phase 2: Post-release

Duration: 6 months

Assessments: LSI-R/Y-LSI assessments

Components/services offered within phase:

- Housing support (Rural Assistance Center vouchers)
- Intensive post-release case supervision, through the integrated case management/reentry team
- Specific targeted services include, as needed, substance abuse treatment, mental health counseling, medical services, dental services, employment skills/vocational training, education, housing assistance, parenting skills training, domestic violence treatment, life skills training, anger management, mentoring, family reintegration, job placement, and faith-based services

Coordination of services:

- Reentry Team

CHANGES EXPECTED AS A RESULT OF SVORI FUNDING

System-level changes

- Increased collaboration among service agencies (both governmental and community-based organizations)
- Community reach-in through the reentry team

Individual-level changes

- Intensive case management
- Meeting the probation officer (as part of the team) and community providers before release to work on the reentry plan
- Mentoring
- Housing support with voucher program
- Assistance in qualifying for Medicare/Medicaid

TARGET POPULATION

Population type	Male and female juveniles
Number of targeted prisoners	51–100
Inclusion criteria	Categorized as “High Risk” based on LSI-R/YO-LSI assessment
Exclusion criteria	None
Pre-release facilities	All State prisons
Post-release locations	Androscoggin, Knox, Penobscot, and Washington counties
Participation	Voluntary
Legal release status	About 40% of offenders are on probation

PROGRAM ORGANIZATION AND SERVICES

Steering committee	ME DOC/Reentry Network
Post-release reentry authority	ME DOC
Number of phases	2

Phase 1: Pre-release

Duration: 6 months

Assessments: LSI-R/Y-LSI assessments

Components/services offered within phase:

- Housing support (RAC vouchers)
- Intensive post-release case supervision, through the integrated case management/reentry team
- Specific targeted services include, as needed, substance abuse treatment, mental health counseling, medical services, dental services, employment skills/vocational training, education, housing assistance, parenting skills training, domestic violence treatment, life skills training, anger management, and faith-based services

Coordination of services:

- Reentry Team

Phase 2: Post-release

Duration: 6 months

Assessments: LSI-R/Y-LSI assessments

Components/services offered within phase:

- Housing support (RAC vouchers)
- Intensive post-release case supervision, through the integrated case management/reentry team
- Specific targeted services include, as needed, substance abuse treatment, mental health counseling, medical services, dental services, employment skills/vocational training, education, housing assistance, parenting skills training, domestic violence treatment, life skills training, anger management, job placement, mentoring, family reunification, and faith-based services

Coordination of services:

- Reentry Team

CHANGES EXPECTED AS A RESULT OF SVORI FUNDING

System-level changes

- Increased collaboration among service agencies (both governmental and community-based organizations)
- Community reach-in through the reentry team

Individual-level changes

- Intensive case management
- Meeting the probation officer (as part of the team) and community providers before release to work on the reentry plan
- Mentoring
- Housing support with voucher program
- Assistance in qualifying for Medicare/Medicaid