

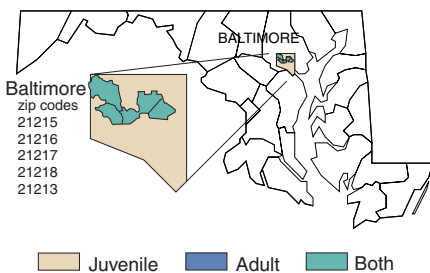
MARYLAND

SVORI Grantees in Maryland

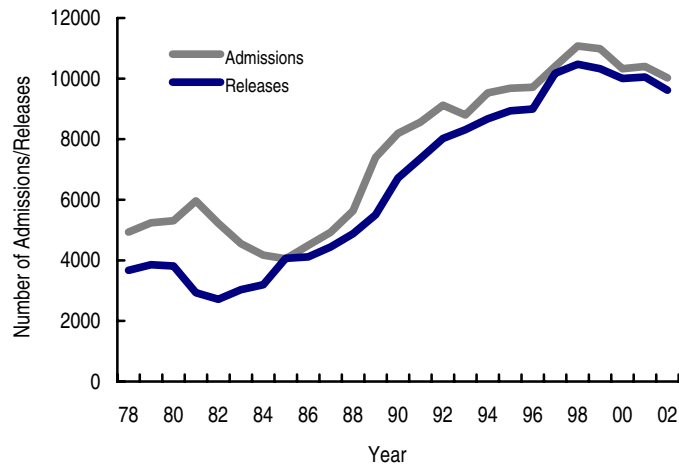
- Maryland Department of Public Safety and Correctional Services (MD DPSCS)

Maryland has one SVORI grantee with two administratively separate programs: one focused on adults returning to five zip codes in Baltimore (depicted in the map below) and the other focused on juveniles returning either to a Baltimore city residence or to the Baltimore City Public School system (also shown). The adult program is using SVORI funding to expand an existing reentry program to include one additional zip code. The juvenile program involves a new partnership between the Department of Juvenile Justice (DJJ) and Baltimore City Public Schools intended to increase the number of released juveniles returning to school. The line chart below provides BJS statistics on adult prison admission and release trends in Maryland over a 24-year period.

Maryland SVORI Target Areas



Maryland Adult Prison Admissions and Releases, 1978–2002



Source: Correctional Populations in the U.S. (BJS, 2002) and Prison and Jail Inmates at Midyear 2002 and 2003 (Harrison and Karberg, 2004)

SVORI Grantee: Maryland Department of Public Safety and Correctional Services

SVORI website	None
Data management system	The adult program has a mainframe database at Baltimore, the Metropolitan Transition Center (MTC), and the SVORI flagging is done by hand. DJJ uses ASSIST, which is a data management system capable of flagging SVORI participants.
Local evaluation planned	Researchers at the University of Maryland are conducting the adult program evaluation; the juvenile program does not have a local evaluation planned
Program names	Reentry Partnership (REP) Juvenile Reentry Program

MD DPSCS: PROGRAM 1

Reentry Partnership (REP)

TARGET POPULATION

Population type	Male adults
Number of targeted prisoners	201+
Inclusion criteria	Ages 24–35 and have been assessed as serious and violent at least 1 year prior to release
Exclusion criteria	Sex offenders, those with detainers, and the severely mentally ill
Pre-release facilities	Men: MTC—Baltimore
Post-release locations	Five zip codes in Baltimore: 21213, 21215, 21216, 21217, 21218
Participation	Voluntary
Legal release status	About 60% of participants will be on parole supervision

PROGRAM ORGANIZATION AND SERVICES

Steering committee	A reentry coalition or task force of agencies meets to set up guidelines for supervision of offenders returning to the community
Post-release reentry authority	None
Number of phases	2

Phase 1: Pre-release**Duration:** 90 days**Assessments:** Risk and needs assessments provided**Components/services offered within phase:**

- Recruitment meetings or “exit interviews” occur each month at MTC (involving the parole officer, the Community Case Manager [CCM]), the Advocate, a police officer, MD DPSCS staff, and service providers)
- CCM, and Advocates assist prisoners in obtaining necessary forms of identification
- Male REP participants receive three courses pre-release: (1) Outreach (life skills training), (2) Strive (job readiness training), and (3) a weekly relapse prevention meeting through Patrick Allen House
- Specific targeted services include, as needed, substance abuse treatment, mental health counseling, employment skills/vocational training, education, housing assistance, and life skills training

Coordination of services:

- Enterprise Foundation sends caseworkers into MTC; Alternative Directions provides services to the 20 women in the program

Phase 2: Post-release**Duration:** Variable**Assessments:** The case plan is created from the needs assessment**Components/services offered within phase:**

- Retrieval of men from MTC by caseworker is provided
- Group and individual counseling is provided
- Intensive substance abuse treatment for women at Alternative Directions is provided
- Case management and assistance in obtaining necessary forms of ID provided
- Release plan is implemented
- Male participants are assigned a CCM and an Advocate (usually an ex-offender) who has regular contact with them and links them to services
- Specific targeted services include, as needed, substance abuse treatment, mental health counseling, employment skills/vocational training, education, housing assistance, anger management, parenting skills training, mentoring, support group network, and life skills training

Coordination of services:

- Enterprise Foundation (men), Alternative Directions (women)

CHANGES AS A RESULT OF SVORI FUNDING

System-level changes

- Zip code added to the post-release geographic parameters
- Twenty women are being served post-release by Alternative Directions
- Increasing staff by adding a CCM and Advocate to East Baltimore, adding an Advocate in Harlem Park, and adding a CCM and Advocate in Garrison-Park Heights

Individual-level changes

- Prisoner establishes a relationship with a caseworker pre-release and receives ongoing services and linkages to services from the caseworker post-release
- Participants are provided with financial assistance for transportation assistance and to obtain necessary forms of identification

TARGET POPULATION

Population type	Male and female juveniles
Number of targeted prisoners	201+
Inclusion criteria	All youth falling within the geographical parameters
Exclusion criteria	None
Pre-release facilities	Participants come from Charles H. Hickey Junior School (Baltimore), Thomas J.S. Waxter Children's Center (girls; Laurel), Thomas O'Farrell (Marriottsville), Youth Centers (Western Maryland), Baltimore City Juvenile Justice Center (Baltimore)
Post-release locations	Those with a Baltimore City residence, and those returning to the Baltimore City Public Schools
Participation	Mandatory
Legal release status	All are released on Intensive Aftercare Supervision through DJJ

PROGRAM ORGANIZATION AND SERVICES

Steering committee	No; workgroup
Post-release reentry authority	The Department of Juvenile Justice
Number of phases	2

Phase 1: Readiness

Duration: Entire duration of incarceration (average 6 months), 5 hours/day

Assessments: Participants receive a WRAT educational assessment and a risk assessment

Components/services offered within phase:

- Educational Specialist continues to work with youth for 2 years post-release
- Case management provided by an aftercare case manager
- Mentoring provided
- Local Management Boards work with the aftercare transition team to ensure that youth are linked to proper services
- Ongoing treatment plan developed
- Specific targeted services include, as needed, substance abuse treatment, mental health counseling, medical and dental services, employment skills/vocational training, education, housing assistance, parenting skills training, domestic violence counseling, life skills training, anger management, and faith-based services

Coordination of services:

- Transition teams consisting of a CCM, parents, student, a parent liaison, and an educational transition specialist
- Those in Intensive Aftercare Supervision will also have an Intensive Aftercare supervisor

Phase 2: Post-release

Duration: 2 years

Assessments: Unknown

Components/services offered within phase:

- Educational Specialist continues to work with youth for two years post-release
- Case management provided by an aftercare case manager
- Mentoring provided
- Local Management Boards work with the aftercare transition team to ensure that youth are linked to proper services
- Ongoing treatment plan developed
- Specific targeted services include, as needed, substance abuse treatment, mental health counseling, medical and dental services, employment skills/vocational training, education, housing assistance, parenting skills training, domestic violence counseling, life skills training, anger management, and faith-based services

Coordination of services:

- Educational Specialist, DJJ case manager, and the rest of the aftercare transition team provide supervision and link youth to services

CHANGES AS A RESULT OF SVORI FUNDING

System-level changes

- Educational Specialists hired to work with youth throughout incarceration and 2 years post-release
- Credit-recovery program implemented in which 139 computers and 30 printers purchased for incarcerated youth
- Collaboration and partnership between DJJ and the Baltimore City Public Schools

Individual-level changes

- More education-focused services received for a longer period of time
- Educational experience enhanced through stronger supports in the school system