

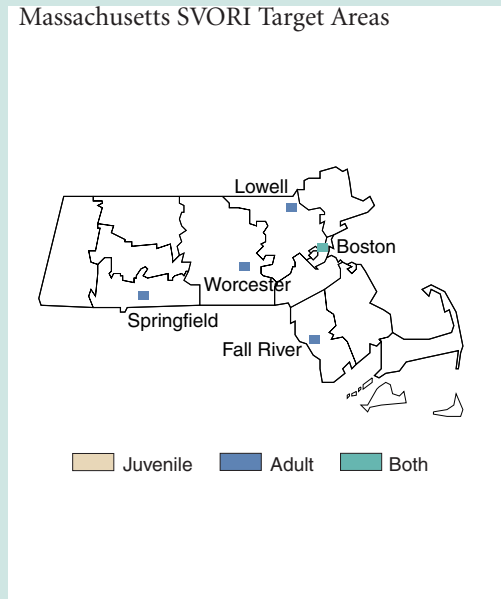
MASSACHUSETTS

SVORI Grantees in Massachusetts

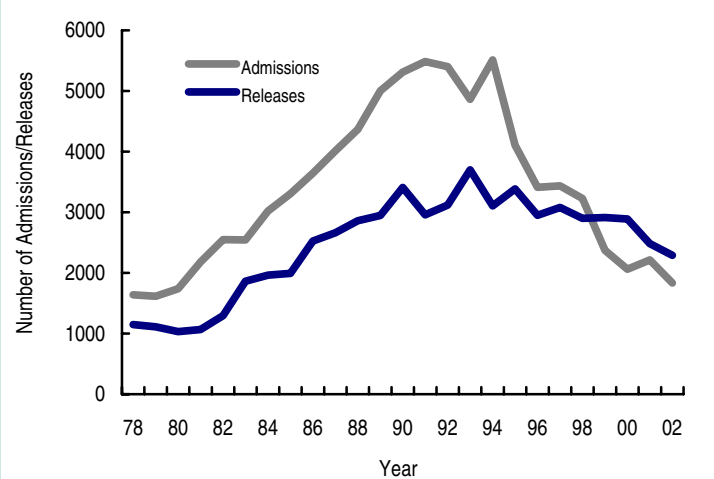
- Massachusetts Department of Correction (MA DOC)
- Massachusetts Department of Youth Services (MA DYS)

Massachusetts has two SVORI grantees: one focused on adults returning to the cities of Boston, Fall River, Lowell, Springfield, and Worcester; and the other focused on juveniles returning to the Boston metropolitan area (depicted in the map below). The adult grantee targeted these five communities because nearly half their prisoners return to those communities. The juvenile grantee used its SVORI funding to augment existing reentry programming by addressing problems with communication, preparation, service delivery, and ineffective outcome measurement. The line chart below provides BJS statistics on adult prison admission and release trends in Massachusetts over a 24-year period.

Massachusetts SVORI Target Areas



Massachusetts Adult Prison Admissions and Releases, 1978–2002



Source: Correctional Populations in the U.S. (BJS, 2002) and Prison and Jail Inmates at Midyear 2002 and 2003 (Harrison and Karberg, 2004)

SVORI Grantee: Massachusetts Department of Correction

| | |
|--------------------------|---|
| SVORI website | None |
| Data management system | The Inmate Management System flags SVORI participants |
| Local evaluation planned | No |
| Program name | Massachusetts Adult |

MA DOC

Massachusetts Adult

TARGET POPULATION

| | |
|------------------------------|--|
| Population type | Male and female adults |
| Number of targeted prisoners | 201+ |
| Inclusion criteria | Those serving at least a 1-year sentence, who have a driver's license, and who have been assessed as high/moderate risk upon admission |
| Exclusion criteria | None |
| Pre-release facilities | All State prisons |
| Post-release locations | Boston, Fall River, Lowell, Springfield, and Worcester |
| Participation | Mandatory |
| Legal release status | Parole supervision for some; others are not on any formal supervision |

PROGRAM ORGANIZATION AND SERVICES

| | |
|--------------------------------|-------------------------------------|
| Steering committee | Reentry Steering Committee |
| Post-release reentry authority | MA DOC for those released on parole |
| Number of phases | 3 |

Phase 1: Institutionally Based Programs

Duration: 1–3 months

Assessments: Risk and needs assessment (LSI-R) upon incarceration

Components/services offered within phase:

- Case management provided
- Risk-reduction plan developed
- Compliance with risk-reduction plan monitored by case manager
- Transition plan developed through a Transition Workshop
- Monthly meetings held to monitor the transition plans of returning offenders
- HIV/AIDS education programs offered
- Sex offender treatment offered
- Transition team formed
- Specific targeted services include, as needed, substance abuse treatment, mental health counseling, employment skills/vocational training, education, parenting skills training, domestic violence prevention and intervention, and anger management

Coordination of services:

- Reentry case manager

Phase 2: Community-Based Transition

Duration: 3 months

Assessments: Career Center Counselors do assessments in the One-Stop Career Centers just after release. Job aptitude and employment-related skills are assessed.

Components/services offered within phase:

- Regular meeting with parole officer scheduled with adherence to reentry plan monitored (for those on parole)
- Graduated sanctions imposed on those who are noncompliant (for those on parole)
- Those not released on formal supervision are made aware of community expectations and are linked to community-based organizations—CCCs and CRCs—to access needed services
- Specific targeted services include, as needed, substance abuse treatment, mental health counseling, employment skills/vocational training, education, housing assistance, parenting skills training, anger management, and life skills training

Coordination of services:

- Reentry case manager, and parole officer (if applicable)

Phase 3: Community-Based Long-Term Support

Duration: 10–12 months

Assessments: No other formal assessments are completed at this time.

Components/services offered within phase:

- Participants are linked to community-based organizations—CCCs and CRCs—to access needed services
- Those on intensive supervision are moved to (less strict) regular caseload supervision
- Transition team composition is changed to reflect the community-based networks that the participant has formed
- Specific targeted services include, as needed, substance abuse treatment, mental health counseling, employment skills/vocational training, education, housing assistance, parenting skills training, anger management, and life skills training

Coordination of services:

- Community case manager

CHANGES AS A RESULT OF SVORI FUNDING

System-level changes

- Working relationships have been formalized among MA DOC, the Department of Labor, and the Workforce Investment Boards
- Post-release needs of participants have been better identified

Individual-level changes

- Relationship with reentry case manager pre-release established and continued through ongoing services and linkages to services post-release
- Intensive case management and individualized plan development increased

SVORI Grantee: Massachusetts Department of Youth Services

| | |
|--------------------------|---|
| SVORI website | None |
| Data management system | MAJJIC system electronically tracks clients |
| Local evaluation planned | Yes |
| Program name | Going Home—Massachusetts Juvenile Program |

MA DYS Going Home—Massachusetts Juvenile Program

TARGET POPULATION

| | |
|------------------------------|---|
| Population type | Male and female juveniles and youthful offenders |
| Number of targeted prisoners | 151–200 |
| Inclusion criteria | Ages 14–21 who have been assessed as high risk upon incarceration and those convicted of an offense in Grid Level 4 or higher in addition to firearm and violent offenses in Grid Level 3 |
| Exclusion criteria | None |
| Pre-release facilities | All facilities in the Metro-Boston area; however, most will come from the Metropolitan Treatment Center |
| Post-release locations | Metro-Boston area—Dorchester, Roxbury, Mattapan, and the South End |
| Participation | Mandatory until 18th or 21st birthday, depending on the offense |
| Legal release status | Participants are under DYS supervision |

PROGRAM ORGANIZATION AND SERVICES

| | |
|--------------------------------|--------------------|
| Steering committee | Steering committee |
| Post-release reentry authority | MA DYS |
| Number of phases | 3 |

Phase 1: Institutionally Based Programs

Duration: 1–3 months

Assessments: YLSI (risk assessment tool), Clinical assessment battery, MAYSI-2, SASSI, a Neuropsychological Screening Inventory, and the Mississippi Post-Traumatic Stress Disorder assessment tool

Components/services offered within phase:

- Case management provided by residential caseworkers
- Treatment plan developed
- Monthly treatment meetings held
- Reentry plan developed and reviewed 30 to 60 days pre-release at a discharge meeting
- Transition team formed including residential caseworker, community caseworker, residential clinical staff, reentry case manager, and the client’s family

- Family counseling
- Relapse prevention plan developed
- Specific targeted services include, as needed, substance abuse treatment, mental health counseling, medical and dental services, employment skills/vocational training, education, anger management, sex offender counseling, and life skills training

Coordination of services:

- Transition team

Phase 2: Community-Based Transition

Duration: Variable

Assessments: Unknown

Components/services offered within phase:

- Community caseworker ensures that reentry plan is implemented upon release
- Reentry case manager provides intensive

case management and the coordination of services

- Family members receive referrals to needed services
- Mandatory family participation and family counseling provided
- Electronic monitoring provided
- Reentry Plan becomes Reentry Court “contract” and is presented at court upon release
- Specific targeted services include, as needed, substance abuse treatment, mental health counseling, employment skills/vocational training, education, housing assistance, parenting skills training, anger management, faith-based services, and life skills training

Coordination of services:

- Reentry case manager through MA DYS

Phase 3: Community-Based Long-Term Support

Duration: 10–12 months

Assessments: Unknown

Components/services offered within phase:

- Community caseworker continually revises reentry plan
- Reentry case manager provides intensive case management and coordinated services
- Family members receive referrals to needed services
- Mandatory family participation and family counseling provided
- Electronic monitoring provided
- Compliance is monitored by DYS, and graduated sanctions are administered for violations
- A Grant of Conditional Liberty Agreement is completed by the community caseworker and signed by the youth
- Specific targeted services include, as needed, substance abuse treatment, mental health counseling, employment skills/vocational training, education, housing assistance, parenting skills training, anger management, faith-based services, and life skills training

Coordination of services:

- Reentry case manager through MA DYS

CHANGES AS A RESULT OF SVORI FUNDING

System-level changes

- New staff hired—community caseworker, reentry case manager
- Concentrated effort on serious offenders so that it is much harder for those kids to “slip through the cracks”

Individual-level changes

- Increased use of electronic monitoring
- Increased use of intensive case management and individualized plan development