

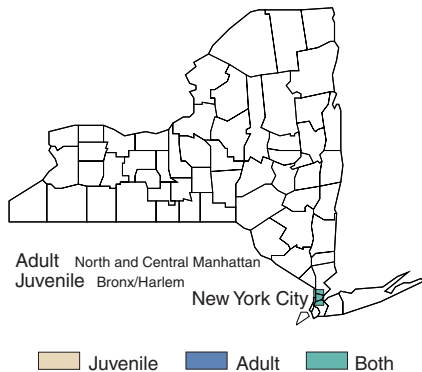
NEW YORK

New York has two SVORI grantees: one focused on adults returning to North and Central Manhattan, and one focused on juveniles returning to the Bronx and Harlem (depicted in the map below). The line chart below provides BJS statistics on adult prison admission and release trends in New York over a 24-year period.

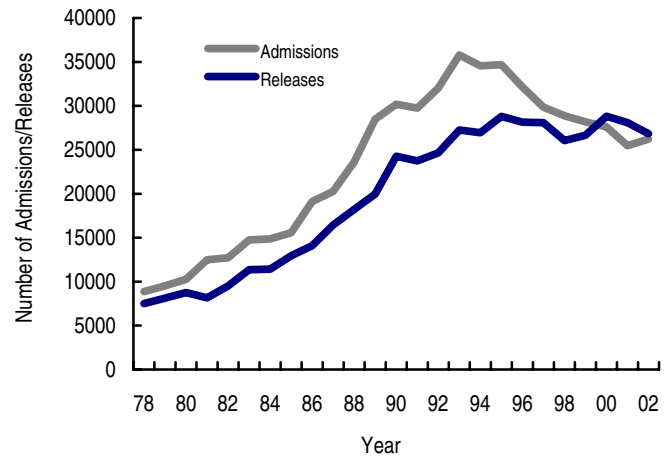
SVORI Grantees in New York

- New York Department of Correctional Services (NY DCS)
- New York State Office of Children and Family Services (NY CFS)

New York SVORI Target Areas



New York Adult Prison Admissions and Releases, 1978–2002



Source: Correctional Populations in the U.S. (BJS, 2002) and Prison and Jail Inmates at Midyear 2002 and 2003 (Harrison and Karberg, 2004)

SVORI Grantee: New York Department of Correctional Services

SVORI website	None
Data management system	Using a SVORI-specific MIS
Local evaluation planned	Yes
Program name	Targeted Assessment and Reentry Program (TARP)

NY DCS

Targeted Assessment and Reentry Program (TARP)

TARGET POPULATION

Population type	Male adults
Number of targeted prisoners	51–100 annually
Inclusion criteria	Ages 17–35 and in maximum security prisons
Exclusion criteria	None
Pre-release facilities	Participants come from all maximum security prisons in the State, but all are transferred to Sing Sing before release
Post-release locations	North and Central Manhattan
Participation	Voluntary
Legal release status	Most are under conditional release/parole supervision

PROGRAM ORGANIZATION AND SERVICES

Steering committee	Policy Advisory Group and Neighborhood Coordinating Council
Post-release reentry authority	Division of Parole
Number of phases	3

Phase 1: Institutional Phase

Duration: 60–90 days

Assessments: Risk and Needs Assessment Instrument

Components/services offered within phase:

- Construction of a reentry plan based on the offender’s Risk and Needs Assessment results
- Employment services, including employment-needs review and job-readiness training
- Assistance with Medicaid applications
- Contract for employment services and aggression replacement therapy
- Contact with faith-based organizations from the community prior to release
- Specific targeted services include, as needed, substance abuse treatment, mental health counseling, medical and dental services, employment skills/vocational training, education, housing assistance,

parenting skills training, domestic violence services, life skills training, anger management, and family services

Coordination of services:

- TARP Policy Advisory Group

Phase 2: Community-Based Transition Phase

Duration: Lasts until sentence expiration or discharge from parole

Assessments: Risk and Needs Assessment only for conditional release participants

Components/services offered within phase:

- Access to job training or employment, substance abuse treatment, housing, mental and other health services, and benefits assistance
- Specific targeted services include, as needed, substance abuse treatment, mental health counseling, medical and dental services, employment skills/vocational

training, education, housing assistance, parenting skills training, domestic violence services, life skills training, anger management, and family services

Coordination of services:

- TARP Policy Advisory Group

Phase 3: Community-Based Long-Term Support

Duration: Varies; services will be provided based on the needs of the offender

Assessments: Failure analysis meeting and treatment team meeting/notes

Components/services offered within phase:

- Continued support of community-based organizations and faith-based organizations

Coordination of services:

- Neighborhood Coordinating Council

CHANGES EXPECTED AS A RESULT OF SVORI FUNDING

System-level changes

- TARP Policy Advisory Group and Neighborhood Coordinating Council assist in collaboration of programs and services

Individual-level changes

- The Risk and Needs Assessment Instrument targets greater supervision in the case management strategy
- Employment Specialist assists offenders with employment needs during post-release
- SVORI participants get preferential treatment in regard to program enrollment and more intensive services
- Increasing level of cooperation among agencies
- Integrated case management, including the offender and community service providers
- New staff hired to broker pre-release services for offenders

SVORI Grantee: New York State Office of Children and Family Services

SVORI website	None
Data management system	There are four databases managed by the NY Office of Children and Family Services that include program participants
Local evaluation planned	Yes
Program name	Back to Your Future

NY CFS

Back to Your Future

TARGET POPULATION

Population type	Male juveniles
Number of targeted prisoners	51–100 annually
Inclusion criteria	Must have a “viable” home to return to for eligibility
Exclusion criteria	Severe mental illness
Pre-release facilities	One of two detention centers in the Bronx
Post-release locations	Bronx/Harlem area
Participation	Voluntary
Legal release status	All participants are under court-ordered intensive supervision

PROGRAM ORGANIZATION AND SERVICES

Steering committee	Unknown
Post-release reentry authority	NYS Office of Children and Family Services
Number of phases	2

Phase 1: Residential Component

Duration: 1–3 months

Assessments: Risk and needs assessment

Components/services offered within phase:

- Reintegration plan development begins immediately upon admission—implemented 4 weeks prior to release
- Specific targeted services include, as needed, substance abuse treatment, mental health counseling, medical and dental services, employment skills/vocational training, education, housing assistance, parenting skills training, domestic violence counseling, life skills training, anger management, Moral Reconation Therapy, and functional family therapy

Coordination of services:

- NYS Office of Children and Family Services

Phase 2: Reintegration Plan Implementation

Duration: : 4–6 months

Assessments: Treatment team meeting/notes

Components/services offered within phase:

- Specific targeted services include, as needed, substance abuse treatment, mental health counseling, medical and dental services, employment skills/vocational training, education, housing assistance, parenting skills training, domestic violence counseling, life skills training, anger management, Moral Reconation Therapy, functional family therapy

Coordination of services:

- Intensive Aftercare Worker

CHANGES EXPECTED AS A RESULT OF SVORI FUNDING

System-level changes

- Introduction of moral reconnection therapy and Functional Family Therapy, which have both expanded into other areas of NY State programs

Individual-level changes

- Program focuses only on evidence-based components
- Geographic specificity encourages family and community involvement
- Families are active participants in the creation of the case plan