

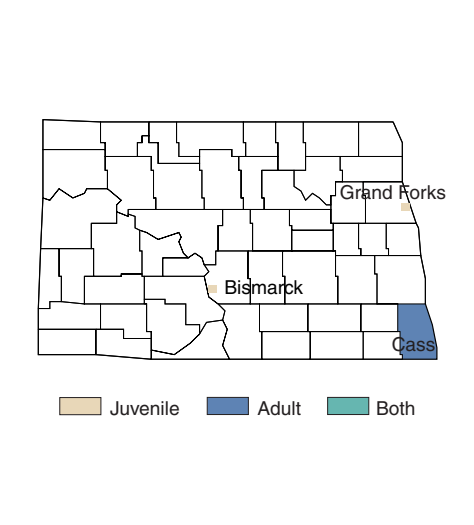
NORTH DAKOTA

North Dakota has two SVORI grantees: one grantee focuses on adults returning to Cass County (depicted in the map below), and the other grantee focuses on juveniles returning to the cities of Bismarck and Grand Forks (also shown). The adult grantee chose to target Cass County after data analysis showed that a large number of prisoners returning there met the eligibility criteria. The juvenile grantee targeted Bismarck because the majority of juveniles return to that community. The line chart below provides BJS statistics on adult prison admission and release trends in North Dakota over a 24-year period.

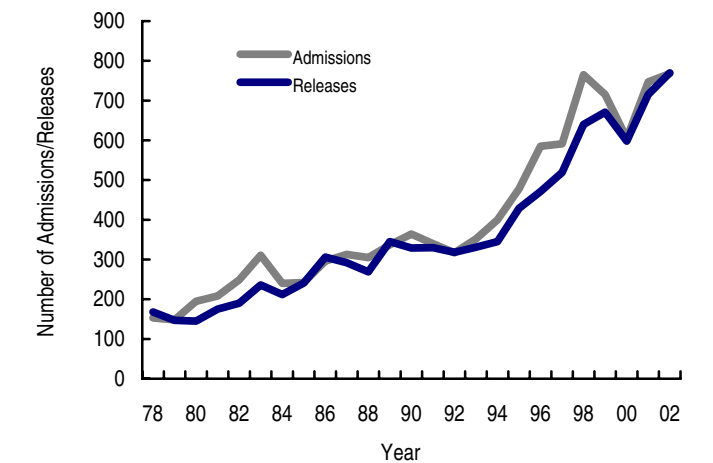
SVORI Grantees in North Dakota

- North Dakota Department of Corrections and Rehabilitation (DOCR), Division of Field Services (DFS)
- North Dakota DOCR, Division of Juvenile Services (DJS)

North Dakota SVORI Target Areas



North Dakota Adult Prison Admissions and Releases, 1978–2002



Source: Correctional Populations in the U.S. (BJS, 2002) and Prison and Jail Inmates at Midyear 2002 and 2003 (Harrison and Karberg, 2004)

SVORI Grantee: North Dakota Department of Corrections and Rehabilitation, Division of Field Services

SVORI website	None
Data management system	Site is maintaining a spreadsheet to track SVORI participants
Local evaluation planned	No
Program name	Reentry Program

ND DOCR DFS

Reentry Program

TARGET POPULATION

Population type	Male and female adults
Number of targeted prisoners	101–150
Inclusion criteria	Ages 18–35, risk assessment score of 24 or higher (at the time of commitment), history of violence, current violent offense, aggravating factors or other assessments that in the discretion of corrections officials deem the person eligible, and free of detainees prior to release
Exclusion criteria	None
Pre-release facilities	All State prisons
Post-release locations	Cass County
Participation	Mandatory
Legal release status	All participants are under parole supervision

PROGRAM ORGANIZATION AND SERVICES

Steering committee	Advisory Board
Post-release reentry authority	NC DOCR DFS
Number of phases	3

Phase 1: Protect and Prepare

Duration: 1–3 months

Assessments: LSI-R

Components/services offered within phase:

- Multi-disciplinary Reentry Team to review participants’ progress and recommend institutional and community service needs
- Case management provided by Institutional Parole Officer (IPO)
- Focus on victim restitution
- Individualized reentry plan developed by IPO and participant near time of release with recommendations from Reentry Team
- Completion of recommended educational, treatment, and other institutional programs
- Review of release plan by Cass County Screening Team prior to release
- Specific targeted services include, as needed, substance abuse and mental health treatment, medical/dental, employment/vocational (industrial work program and computer training), education, housing assistance, parenting skills training, life skills training, domestic violence treatment, anger management, financial counseling, faith-based services, sex offender treatment, violent offender program, cognitive restructuring, and family counseling
- Release and continuation in program dependent on participant progress and reduction of risk

Coordination of services:

- IPO oversees in-house treatment for individual cases

Phase 2: Control and Restore

Duration: 4–6 months (depends on length of sentence; goal is to serve participants 1 year post-release)

Assessments: NC DJJDP Risk Assessment and Needs Assessment

Components/services offered within phase:

- Transition to community corrections residential program (most participants)
- Parole supervision
- Graduated levels of supervision
- Case management provided by IPO and Parole Field Officer
- Transition to community corrections residential program (most participants)
- Community service
- Emphasis on faith-based and family connections
- Specific targeted services include, as needed: substance abuse (chemical dependency aftercare, AA/NA) and mental health treatment; employment services/vocational training; housing assistance; financial counseling (including budgeting to meet child support, victim restitution, fines/fees requirements); parenting skills training; life skills training; domestic violence treatment; anger management; and ESL

Coordination of services:

- Case is staffed by both IPO and Parole Field Officer; transition of case from IPO to Parole Field Officer

Phase 3: Responsibility and Productivity

Duration: Participants remain in the reentry program until the expiration of their parole

Assessments: LSI-R

Components/services offered within phase:

- Case management provided by Parole Field Officer
- Graduated levels of supervision
- Adjustments made to plan as needed
- Emphasis on faith-based and family connections
- Specific targeted services include, as needed, substance abuse and mental health treatment, employment/vocational skills training, housing assistance, parenting skills training, life skills training, domestic violence services, anger management, and ESL

Coordination of services:

- Case management provided by Parole Field Officer

CHANGES EXPECTED AS A RESULT OF SVORI FUNDING

System-level changes

- Increased service linkage and collaboration among providers
- Services provided in more timely manner
- A halfway house philosophy that is supportive rather than controlling and restrictive
- Feedback mechanism among agencies to ensure that collaboration is working
- Shared agency protocols

Individual-level changes

- Individualized reentry plan
- IPO fills in gaps in institutional case management and community transition planning

SVORI Grantee: North Dakota DOCR, Division of Juvenile Services

SVORI website	None
Data management system	Automated case management software that integrates both institutional and community placement data is being utilized to track offenders from beginning of custody through all placements, until parental custody is restored or emancipation is granted
Local evaluation planned	North Dakota Association of Counties is conducting a local evaluation
Program name	Juvenile Program

TARGET POPULATION

Population type	Male and female juveniles
Number of targeted prisoners	51–100
Inclusion criteria	Ages 13–17 and high probability of re-offending (general eligibility criteria) as determined by risk/needs assessment
Exclusion criteria	None
Pre-release facilities	Youth Correctional Center (YCC)
Post-release locations	Cities of Bismarck and Grand Forks
Participation	Mandatory
Legal release status	Under custody of ND DOCR DJS

PROGRAM ORGANIZATION AND SERVICES

Steering committee	None
Post-release reentry authority	DJS
Number of phases	3

Phase 1: Institutionally Based Programming

Duration: 9–12 months (entire duration of commitment to institution)

Assessments: COMPAS, MAYSI, SJS

Components/services offered within phase:

- Universal enhanced pre-release services to all juveniles at YCC with focus on educational achievement
- Increased special education services
- Enhanced summer school programming
- Risk/needs assessment
- Case management
- Transition team to work with family and juvenile to develop treatment and reentry plans
- Specific targeted services include, as needed, substance abuse and mental health assessment and treatment; full medical and dental services; employment/vocational training; life skills training; parenting skills training; anger management; individual, group, and family counseling; education; multi-cultural curricula; religious programming; and restorative justice programming

Coordination of services:

- The case manager serves as the transition team lead member to coordinate and manage juveniles' reentry. Case manager follows youth from their communities to the institutions and back, serving as natural bridge from youth to family to community to institution.

Phase 2: Community-Based Transition Programs

Duration: 4–12 months

Assessments: Assessment conducted upon admission to Day Treatment; A-COPE taken at 3 points in Day Report program; COMPAS, MAYSI

Components/services offered within phase:

- Most juveniles participate in either Day Treatment (school-based) or Day Report Center (operated by nonprofit community partner)
- Day Treatment program precedes transition to regular classroom, serving youth in need of structured and graduated reentry to school for 6–12 months; includes culturally competent service delivery mechanisms
- Treatment plans reviewed and adjustments made every 9 weeks
- Day Report Center serves juveniles currently on probation or under custody who could benefit from added supervision, structure, and competency/skill development as they transition back to a less intensive level of supervision (after school, 16 weeks, 3 levels)
- Day Report Center instruction foci include victim empathy, study skills, anger management, conflict resolution, problem solving, life skills training, career planning, positive recreation, and volunteer service
- Conferencing method used to provide support and accountability at Day Report Center

- General community resources available include intensive supervision, treatment (for substance abuse, physical/sexual abuse, and mental health), in-home counseling, employment (diversified occupations) services, and, foster care services
- Case management and planning provided to all participants

Coordination of services:

- The Day Treatment social worker and DJS case manager review the participants' treatment plans and coordinate treatment services

Phase 3: Community-Based-Long Term Support

Duration: Until termination of the juvenile's court order

Assessments: COMPAS, MAYSI

Components/services offered within phase:

- Case management
- Focus on self-sufficiency planning, education, employment/vocational needs, and independent housing
- Tracking services and intensive in-home services

Coordination of services:

- DJS case manager continues to oversee treatment plan; is well acquainted with resources available and application procedures of child-serving agencies

CHANGES AS A RESULT OF SVORI FUNDING

System-level changes

- Increased services for youth in Bismarck and Grand Forks communities

Individual-level changes

- Enhanced educational services in institution
- Opportunity for gradual transition back to school and community through Day Treatment program
- Increased programming and support available through Day Report Center