

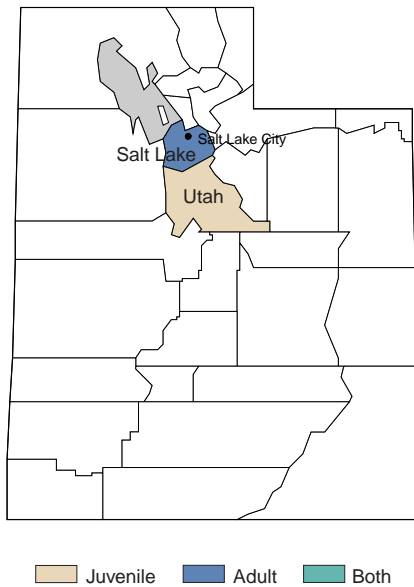
UTAH

SVORI Grantees in Utah

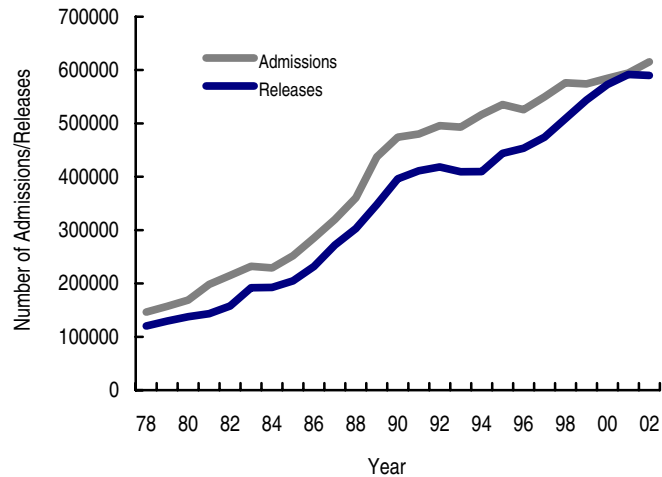
Utah has two SVORI grantees: one focused on adults returning to Salt Lake County and one focused on juveniles returning to Utah County (depicted in the map below). The adult grantee targeted the Salt Lake City area in part because this area has the highest number of serious and violent parolees. The line chart below provides BJS statistics on adult prison admission and release trends in Utah over a 24-year period.

- Utah Department of Corrections (UT DOC)
- Utah Division of Youth Corrections (UT DYC)

Utah SVORI Target Areas



Utah Adult Prison Admissions and Releases, 1978–2002



Source: Correctional Populations in the U.S. (BJS, 2002) and Prison and Jail Inmates at Midyear 2002 and 2003 (Harrison and Karberg, 2004)

SVORI Grantee: Utah Department Corrections

SVORI website	None
Data management system	O (operations) track and F (field) track is a model system that other States are considering replicating. A Microsoft Access database is used for SVORI participants.
Local evaluation planned	No
Program name	Reentry STEP Program

UT DOC

The Reentry STEP Program

TARGET POPULATION

Population type	Male and female adults
Number of targeted prisoners	51–100
Inclusion criteria	Prison classification Level 3 and up, parole date between 12 and 42 months, participation in/completion of prison residential therapeutic community program, desire to change, willingness to commit to program, deficiencies in two or more dynamic risk factors, and low risk of absconding
Exclusion criteria	Serious history of assaults that is assessed as putting other participants at an unreasonable risk for harm, current episode of incarceration is due to absconding, serious impairments to cognitive or intellectual functions, classification as a sex offender, and unwillingness to participate

Pre-release facilities	All State prisons
Post-release locations	Salt Lake County
Participation	Voluntary
Legal release status	All participants are parolees

PROGRAM ORGANIZATION AND SERVICES

Steering committee	Management team includes grant employees, workforce services, Department of Education, and Division of Substance Abuse (i.e., “decision makers”)
Post-release reentry authority	Adult Probation and Parole
Number of phases	3

Phase 1

Duration: 5 months

Assessments: Pre-sentence Report, LSI, mental and physical health evaluations, ASI, TABE, and GATB

Components/services offered within phase:

- Provide case management and develop a reentry plan
- Provide mental health services, substance abuse treatment, and vocational training and support
- Assign mentors
- Orient new members
- Facilitate peer support and faith-based support groups
- Counsel clients and family members prior to release
- Offer accountability-based incentives and sanctions
- Perform random drug testing
- Encourage participation in life skills training such as anger management, victim impact, and personal finances

Coordination of services:

- A correctional rehabilitative specialist will provide case management and coordinate services

Phase 2

Duration: 12–24 months (steady employment for 1 year will be required for Client to move to Phase 3)

Assessments: Conduct ongoing assessments as needed

Components/services offered within phase:

- Provide case management and continue to develop the reentry plan
- Conduct monthly meetings with treatment team, client, and family
- Implement accountability-based incentives and sanctions, including “Step Bucks” and vouchers for items like bus passes, clothing, and phone cards
- Offer graduated levels of supervision
- Provide intensive vocational training and support, mental health and substance abuse treatment, and community-based life skills classes
- Utilize available low-income housing and housing assistance
- Encourage participation in faith-based/spiritual activities of client choice
- Require regular drug testing

Coordination of services:

- Adult Probation and Parole program coordinators

Phase 3

Duration: 12–24 months

Assessments: Ongoing as needed

Components/services offered within phase:

- Continue case management
- Continue offering incentives (as funding permits) and enforcing sanctions
- Track recidivism
- Encourage client independence
- Provide ongoing vocational support

Coordination of services:

- Adult Probation and Parole program coordinators

CHANGES AS A RESULT OF SVORI FUNDING

System-level changes

- Adult Probation and Parole is partnering with the State Office of Education and the Department of Workforce Services to improve vocational opportunities and outcomes
- Reentry program is recruiting solely out-of-prison Therapeutic Communities in order to offer the supportive environment conducive to pre-release training and preparation
- The Reentry STEP program is spurring improved communication and participation across agencies and disciplines

Individual-level changes

- Incentives like vouchers for bus passes and phone cards are offered in concert with the enforcement of sanctions
- Graduated levels of supervision are used to reward compliance with program goals
- Intensive vocational training and support are offered to improve job acquisition, performance, and maintenance

SVORI Grantee: Utah Division of Youth Corrections

SVORI website	None
Data management system	CARE System—not SVORI-specific but will be used to track SVORI participants
Local evaluation planned	No
Program name	Utah County Aftercare Program (UCAP)

TARGET POPULATION

Population type	Male and female juveniles
Number of targeted prisoners	101–150
Inclusion criteria	Unknown
Exclusion criteria	Unknown
Pre-release facilities	All secure facilities, but Utah County is the primary focus
Post-release locations	Utah County
Participation	Mandatory
Legal release status	Parolees are under the supervision of the Youth Parole Authority

PROGRAM ORGANIZATION AND SERVICES

Steering committee	Yes
Post-release reentry authority	Youth Parole Authority
Number of phases	3

Phase 1: Protect and Prepare**Duration:** 3–4 months**Assessments:** PRA used to identify risks, areas of need, and assets across ten dimensions; psychological battery, including Suicide Probability Scale, Jesness Personality Inventory, WISC-III educational assessment, and the MMPI-A**Components/services offered within phase:**

- Facilitate counseling groups to address issues such as drug and alcohol problems, social skills development, and transition support
- Provide intensive case management and transition planning
- Require participation in either educational or vocational training
- Offer participation in faith-based services from both within and outside the secure facility
- Provide mentors to play supportive roles in youths' lives
- Coordinate pre-release planning and service delivery through case management and input from a multidisciplinary treatment team

Coordination of services:

- UCAP staff will coordinate pre-release planning and service delivery through case management and input from a multidisciplinary treatment team

Phase 2: Control and Restore**Duration:** 6 months**Assessments:** Reassess as needed**Components/services offered within phase:**

- Review and revise reentry plan
- Help offenders build new community supports
- Reinolve parents and other family members to identify processes for reunification or other alternatives
- Facilitate transition support groups twice weekly
- Assist youth in completing a pre-release checklist covering areas like employment, medical instructions, educational needs, and placement information
- Require a 90-day trial placement with the Youth Parole Authority
- Schedule and monitor home visits and overnight visits during trial placement
- Monitor school or job attendance
- Provide substance abuse and mental health counseling
- Implement a graduated system of sanctions, privileges, and responsibilities
- Offer medical care, including yearly exams, through Medicaid cards
- Conduct drug testing
- Employ electronic monitoring
- Facilitate participation in required community service and restitution activities

Coordination of services:

- UCAP staff will work with the Youth Parole Authority to coordinate placement and service delivery through case management and input from a multidisciplinary treatment team

Phase 3: Responsibility and Productivity**Duration:** 18–24 months**Assessments:** Reassess as needed**Components/services offered within phase:**

- Continue to monitor youth's progress
- Visit youth on at least a monthly basis to check in and remind youth about the availability of support services
- Continue to facilitate access to medical care
- Meet as a multi-agency treatment team to evaluate progress, order necessary reassessments, and determine the need for additional supports

Coordination of services:

- UCAP staff will work with the Youth Parole Authority to coordinate placement and service delivery through case management and input from a multidisciplinary treatment team

CHANGES EXPECTED AS A RESULT OF SVORI FUNDING

System-level changes

- Increased opportunities for communication and cooperation with the Youth Parole Authority
- New funding for day treatment services for newly released offenders
- Education of secure facility staff about the services available to youth in the community

Individual-level changes

- Increased access to transitional services
- Formation of supportive relationships between youth and UCAP staff to ease reentry process
- Graduated levels of privileges and sanctions, which are replacing more punitive systems