

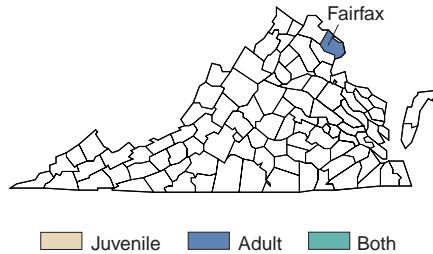
# VIRGINIA

## SVORI Grantees in Virginia

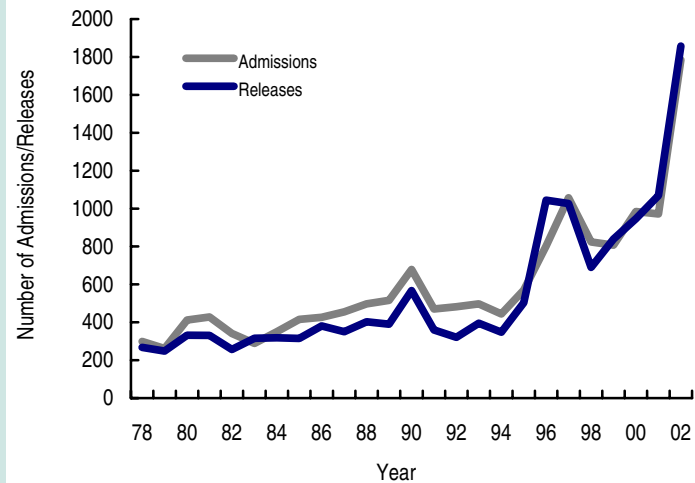
- Virginia Department of Corrections (VA DOC)

Virginia has one SVORI grantee focused on adults returning to Fairfax City/County (depicted in the map below). The line chart below provides BJS statistics on adult prison admission and release trends in Virginia over a 24-year period.

Virginia SVORI Target Areas



Virginia Adult Prison Admissions and Releases, 1978–2002



Source: Correctional Populations in the U.S. (BJS, 2002) and Prison and Jail Inmates at Midyear 2002 and 2003 (Harrison and Karberg, 2004)

## SVORI Grantee: Virginia Department of Corrections

SVORI website	None
Data management system	VA DOC has a database that includes parole and probation
Local evaluation planned	No
Program name	Virginia Serious and Violent Offender Reentry Initiative (VASAVOR)—Going Home to Stay

### VA DOC

### VASAVOR—Going Home to Stay

#### TARGET POPULATION

Population type	Male and female adults
Number of targeted prisoners	151–200
Inclusion criteria	Age 18 or older and convicted of a violent offense
Exclusion criteria	Those with detainees
Pre-release facilities	All State prisons
Post-release locations	Fairfax City/County
Participation	Mandatory
Legal release status	All participants are under probation or parole supervision

## PROGRAM ORGANIZATION AND SERVICES

Steering committee	Management Team
Post-release reentry authority	VA DOC
Number of phases	4

**Phase 1: Institutionally Based Programs****Duration:** Variable**Assessments:** ASI, custody level scoring, TABE, vocational assessment, medical examination, and mental health evaluation**Components/services offered within phase:**

- Case management through Transition Team made up of case liaison, employment representative, mental health representative, and supervisory staff
- Gender-specific programming
- Specific targeted services include, as needed, substance abuse treatment, life skills training, employment programs, sex offender treatment (at specific institutions), counseling, mandated anger management, and mental health counseling (only available at institutions >6,000 inmates)

**Coordination of services:**

- Transition Team with monthly case counseling

**Phase 1.5: Local Jail-Based Program****Duration:** Up to 45 days**Assessments:** Medical, mental health, and classification assessments**Components/services offered within phase:**

- Case management
- Development of reentry plan
- Mentoring
- Support classes for offender families
- Restorative justice
- Specific targeted services include, as needed, life skills training, employability training, vocational training, and education

**Coordination of services:**

- Transition Team

**Phase 2: Community-Based Transition Programs****Duration:** Variable**Assessments:** Risk/Needs Assessment based on the Wisconsin Model is conducted by probation and parole officers**Components/services offered within phase:**

- Electronic Monitoring (Global Positioning Satellite)

- Case management through Transition Team
- Transitional housing
- Specific targeted services include, as needed, medical, mental health, and medication management; job training and placement; substance abuse counseling; dental care; education; parenting skills training; domestic violence counseling; sex offender treatment; life skills training; faith-based services; and anger management

**Coordination of services:**

- Transition Team

**Phase 3: Community-Based Long-Term Support****Duration:** Variable**Assessments:** Risk/needs are periodically reassessed**Components/services offered within phase:**

- Case management through Transition Team
- Referrals to ongoing services

**Coordination of services:**

- Transition Team

## CHANGES AS A RESULT OF SVORI FUNDING

**System-level changes**

- Increased use of electronic monitoring
- Increased involvement of community and public service providers
- Integrated providers for more intensive management

**Individual-level changes**

- Increased ongoing case management
- Transferred to Fairfax County jail 45 days prior to release for SVORI-specific case management and classes
- Funded up to \$3,000 per offender for job training
- Developed release plan before release
- Avoided long waiting lists for services
- Funded for mental health services
- Provided rent subsidies