



Multi-site Evaluation of the Serious and Violent Offender Reentry Initiative

Laura Winterfield Ph.D.
**International Community Corrections Association
Policy Forum**
April 25, 2006



2004-RE-CX-0002

SVORI

- Multi-site Evaluation of the Serious & Violent Offender Reentry Initiative (SVORI):
 - ◆ Collaborative Federal effort to improve reentry outcomes in the areas of criminal justice, employment, education, health and housing
 - ◆ Funded by Education, Health and Human Services, Housing and Urban Development, Justice, and Labor
- 69 grantees are running 89 programs that:
 - ◆ Target supervised adult & juvenile populations
 - ◆ Incorporate partnerships among state and local agencies to provide comprehensive services to prisoners returning to the community
 - ◆ Are locally designed to meet local needs and organizational capabilities



2



The Multi-site SVORI Evaluation

- GOAL: "...determine whether the selected programs have accomplished the overall goal of the Reentry Initiative— increasing public safety by reducing recidivism among the populations served by the program—and determine the relative costs and benefits of the program."
- Evaluation Components
 - ◆ **Implementation Assessment:** document implementation of SVORI, including targeted populations, program elements, and agencies
 - ◆ **Impact Evaluation:** determine the extent to which SVORI improves access to services, enhances employment and health outcomes, and reduces criminal behavior of returning criminals
 - ◆ **Cost-Benefit Evaluation:** determine whether SVORI is cost effective
 - ◆ **Dissemination:** produce useful products throughout the evaluation

Implementation Assessment

- Goal is to describe the programmatic activities in each site
- Completed two rounds of surveys with SVORI Program Directors
 - ◆ 2004 survey results were used in the *National Portrait of SVORI*, the Multi-site Evaluation's preliminary assessment of all 69 sites
 - ◆ 2005 survey results are being used to produce short reports on specific topics, *Reentry Research in Action: Findings from the Field*
 - ◆ Results from both surveys provide information on the individual programs on <www.svori-evaluation.org>
- A final survey of Program Directors will be conducted in early 2006 and will focus on sustainability and 'lessons learned'
- Annual site visits are being conducted in impact sites where offender interviews are being conducted

Impact Evaluation

- Goal is to determine the extent to which SVORI:
 - ◆ improves access to appropriate, comprehensive, integrated services
 - ◆ improves employment, health, & personal functioning of returning prisoners
 - ◆ reduces criminal activity
- Longitudinal study of 3,000 adult & juvenile offenders in 14 states (16 programs)
- Data sources
 - ◆ Four waves of CAPI interviews (drug testing at 3 & 15 months)
 - Baseline (1 month prior to release): July 2004 – November 2005
 - 3-month post-release: October 2004 – May 2006
 - 9-month post-release: April 2005 - December 2006
 - 15-month post-release: November 2005 – April 2007
 - ◆ Administrative agency data (DOC, DJJ, P&P, ESC)

Impact Evaluation Sites

- Northeast (2 states)
 - ◆ Maine
 - ◆ Pennsylvania
- South (5 states)
 - ◆ Florida (juvenile only)
 - ◆ Maryland
 - ◆ Missouri
 - ◆ Oklahoma
 - ◆ South Carolina (adult & juvenile)
- Midwest (4 states)
 - ◆ Kansas (adult & juvenile)
 - ◆ Indiana
 - ◆ Iowa
 - ◆ Ohio
- West (3 states)
 - ◆ Colorado (juvenile only)
 - ◆ Nevada
 - ◆ Washington

*Adult only unless noted

Cost-Benefit Study

- Juvenile Programs
 - ◆ Florida
 - ◆ South Carolina
- Adult Programs
 - ◆ Iowa
 - ◆ Maryland
 - ◆ Ohio
 - ◆ Pennsylvania
 - ◆ South Carolina

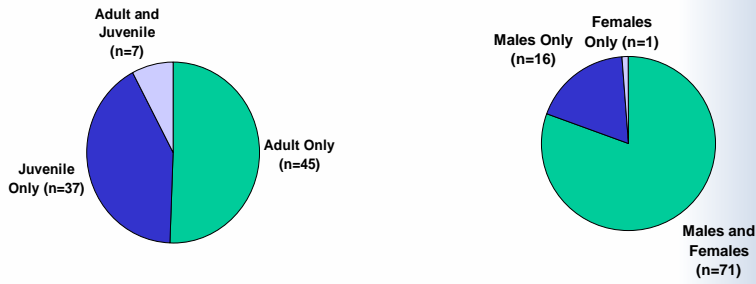
SVORI Implementation Assessment

- Define and document the SVORI programs
 - ◆ Who: Targeted populations
 - ◆ What: Program elements
 - ◆ When: Timing of services and programming
 - ◆ How: Agencies involved; systems integration

Program Implementation

SVORI Program Director Survey, 2005

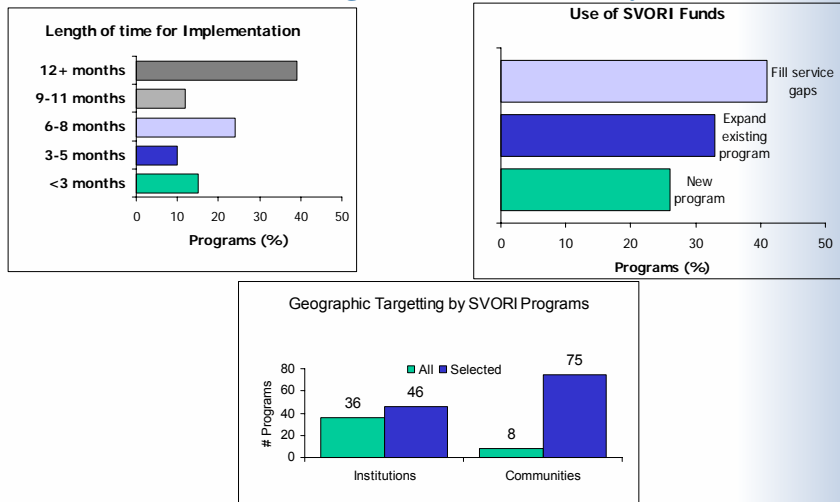
Across all sites, 69 grantees operate 89 programs



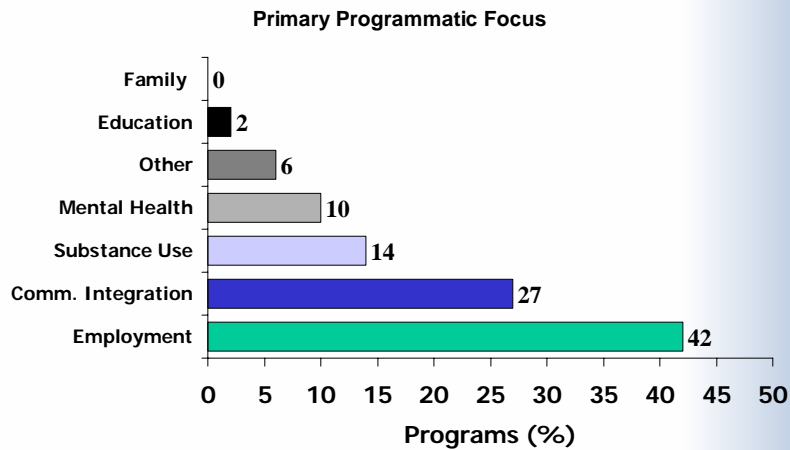
*Note: youthful offender programs classified with adult programs unless the program is a juvenile/youthful offender combination.

Adult Program Implementation

SVORI Program Director Survey, 2005

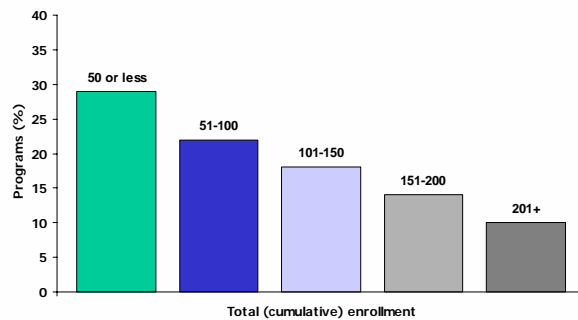


Adult Program Characteristics



Adult Enrollment

- Programs tend to be small (51% have enrolled ≤ 100 people)
- Actual enrollment is lower than programs' initial projections with 67% of programs reporting that their total (cumulative) enrollment was lower than originally projected



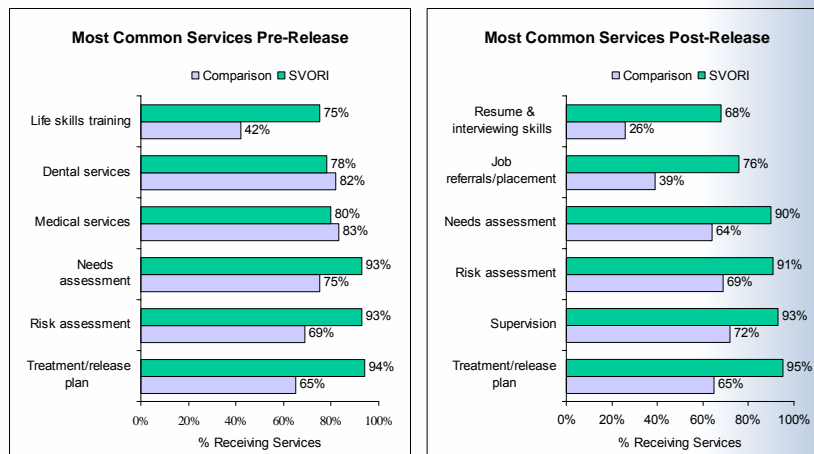
Adult Service Delivery

Programs & Services Measured

- | | |
|---|---|
| 1. Risk assessment | 16. Anger management/violence counseling |
| 2. Needs assessment | 17. Medical services |
| 3. Treatment/release plan development | 18. Dental services |
| 4. Legal assistance | 19. Education/GED/tutoring/literacy |
| 5. Assistance obtaining identification | 20. Vocational training |
| 6. Assistance obtaining benefits | 21. Employment referrals/job placement |
| 7. Financial support/emergency assistance | 22. Resume & interviewing skills development |
| 8. Peer support groups | 23. Work release program |
| 9. 1-on-1 mentoring | 24. Cognitive skills development/behavior pgm. |
| 10. Housing placements/referrals | 25. Life skills training |
| 11. Transportation (post-release only) | 26. Domestic violence services |
| 12. Comprehensive drug treatment programs | 27. Parenting skills development |
| 13. AA/NA | 28. Family reunification |
| 14. Counseling sessions | 29. Family counseling |
| 15. Mental health services | 30. Formal post-release supervision (post only) |

Most Common Services

SVORI Program Director Survey, 2005



Programs Taking A Variety of Approaches to Program Structure

- **Considerable variability in the programmatic emphasis on the pre-release phase**
 - ◆ Duration (and point of entry)
 - ◆ Pre-release planning and community involvement
 - ◆ “Standardized” curriculum vs. individual tailoring
 - ◆ Use of a pre-release facility for programming
- **Also variability in the approach to service coordination**
 - ◆ “Transition team” (“reaching out”) approach
 - ◆ “Reaching in” of community providers
- **And, variability in the involvement of community**
 - ◆ Accountability panel
 - ◆ Involvement of faith-based agencies in monitoring
 - ◆ Mentoring

Programs taking a Variety of Approaches to Service Coordination

- **Case Management**
 - ◆ 92% of programs involve pre-release case management
 - ◆ 94% of programs involve post-release case management
- **Continuity of Care Model**
 - ◆ 40% of programs use the same case manager for pre- and post-release
 - ◆ 35% of programs use the same supervision officer for pre- and post-release
- **79% of programs use a wrap around approach**
- **37% of programs use community accountability panels/boards**
- **71% of programs use offender-specific reentry teams**
- **64% of programs use a one-stop shop**

Implementation Conclusions

- Program Implementation
 - ◆ Most programs were designed to fill service gaps (or expand an existing program) and the majority are now fully operational
 - ◆ Programs did not report encountering many implementation barriers, although community support, insufficient staff, and insufficient funding were reported as problems by some
- Enrollment
 - ◆ Most programs are small and have enrolled fewer people than projected
 - ◆ Primary enrollment barriers are stringent eligibility criteria, facility/agency transfer policies, offenders being identified too late, and inaccurate or unavailable release dates
- Program Characteristics
 - ◆ Programs targeted geographically (pre- and post-release) but do not focus on a specific phase, offender need type, or specific service type
 - ◆ Primary programmatic focus is employment/vocational services

Implementation Conclusions

- Service Coordination
 - ◆ Variety of approaches used
 - ◆ Continuity of care appears to be a widely used strategy
- Service Delivery
 - ◆ Overall, SVORI participants more likely to receive more programs/services than comparable non-participants
 - ◆ For both groups, service delivery slightly higher pre-release than post-release
 - ◆ Differences between SVORI and comparison offenders more pronounced post-release
- Next steps:
 - ◆ Incorporating offender data from the impact evaluation to determine how well sites were able to match individual treatment needs with appropriate services or programming

Impact Evaluation

- Data are being collected in 14 states
 - ◆ 2 states: adults and juveniles
 - ◆ 2 states: juveniles only
 - ◆ 10 states: adults only
- Baseline (pre-release) data collection began July 2004 & concluded the end of November 2005
- Follow-up interviews are being conducted at 3-, 9- & 15-months post release
- Oral swab drug tests are conducted at the 3- & 15-month interviews (unless institutionalized or incarcerated)

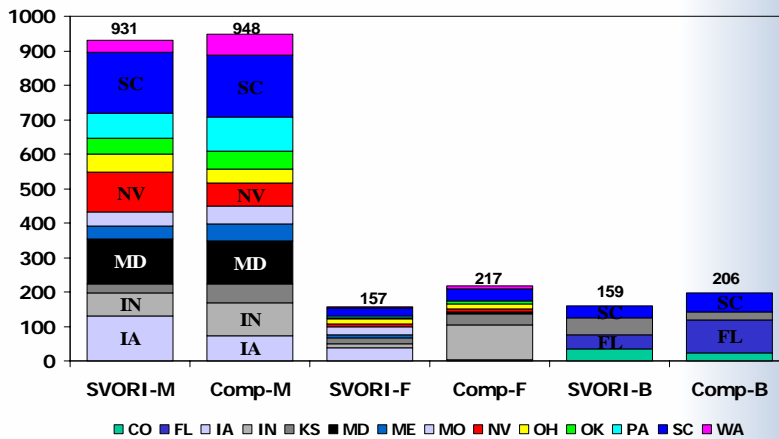
Impact Evaluation Outcome Measures

- **Self Sufficiency & Quality of Life**
 - ◆ Employment
 - ◆ Housing
 - ◆ Family (including contacts, stability & child custody/support)
 - ◆ Community Involvement
- **Health**
 - ◆ Substance Use (sobriety & relapse prevention)
 - ◆ Physical Health
 - ◆ Mental Health
- **Reduced Criminality**
 - ◆ Supervision Compliance
 - ◆ Reoffending
 - ◆ Rearrest
 - ◆ Reconviction
 - ◆ Reincarceration

Data Collection (as of 4/5/2006)

- **Baseline: 4,354 cases fielded**
 - ◆ 2,682 interviewed (62% response rate; 83% excluding 'ineligibles')
 - ◆ 1,672 not interviewed—374 refusals (a refusal rate of 12%)
- **3-month: 2,383 cases fielded**
 - ◆ 1,459 interviewed (64% response rate)
 - ◆ 812 not interviewed
 - ◆ 161 re-incarcerated (100 interviewed)
- **9-month: 1,629 cases fielded**
 - ◆ 886 interviews completed (64% response rate)
 - ◆ 490 not interviewed
 - ◆ 239 re-incarcerated (196 interviews)
- **15-month: 842 cases fielded**
 - ◆ 407 interviews completed (75% response rate)
 - ◆ 136 not interviewed
 - ◆ 123 re-incarcerated (106 interviewed)

Distribution of Cases (Baseline)



Characteristics of Adult Male Respondents

Variable	SVORI	Comparison
Age @ interview	28.8	29.1
White*	32%	37%
Black*	56%	49%
Hispanic	5%	4%
Other race*	7%	10%
Homeless prior to incarceration	12%	12%
HS grad/GED	62%	60%

*p-value < .05

•Offender baseline data

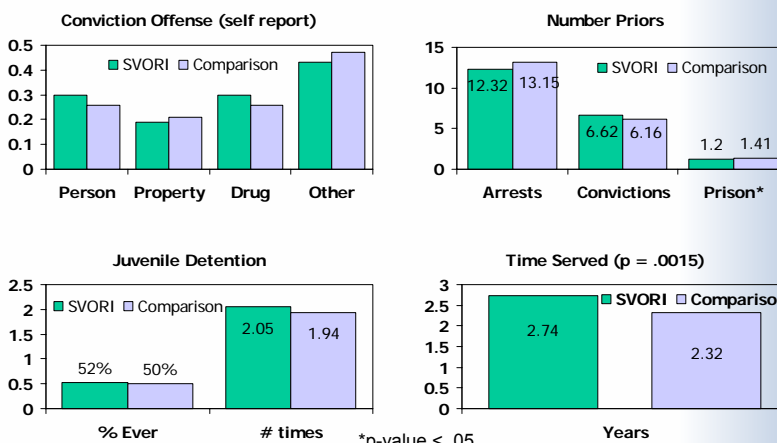


23



Characteristics of Adult Male Respondents

Offender baseline data



24

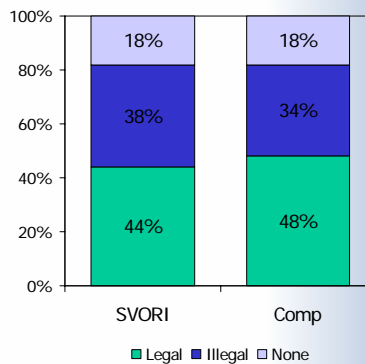


Characteristics of Adult Male Respondents

Offender baseline data

Variable	SVORI	Comparison
Ever employed?	89%	92%
Employed 6 mo prior to incarceration?	64%	67%
Expect to return to previous job (if ever)?	56%	56%
Ever served in military?	05%	05%

...you spent most of your time engaged in ___ activity for money



*p-value < .05

Characteristics of Adult Male Respondents

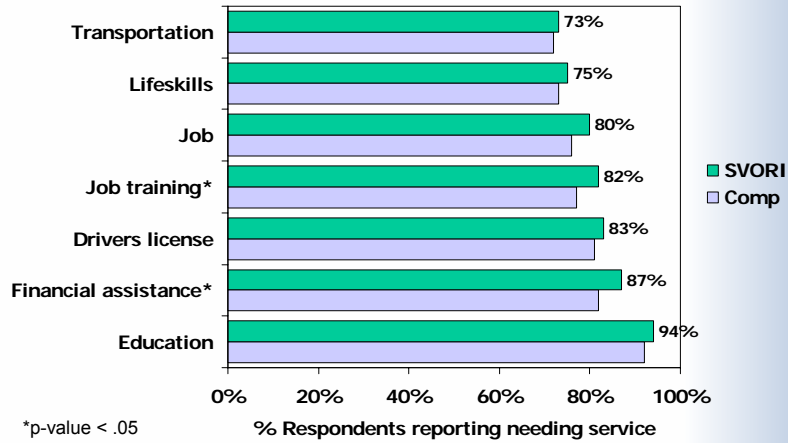
Offender baseline data

Variable	SVORI	Comparison
Currently married/ steady relationship?	38%	40%
Children < 18 yrs?	60%	62%
Family problems with AOD?	72%	73%
Any family member convicted of crime?	75%	76%
Friends before incarceration, convicted?	83%	84%
Friends before incarceration, AOD?	81%	83%

*p-value < .05

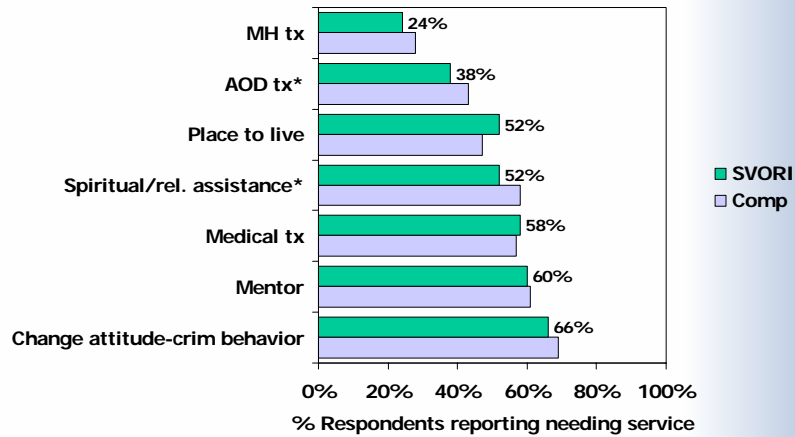
Service/Assistance Needs of Adult Male Respondents

Offender baseline data



Service/Assistance Needs of Adult Male Respondents

Offender baseline data



Conclusions: SVORI vs. Comparison Offenders

- SVORI subjects similar to comparisons on many important measures, including age, criminal history, employment history, AOD history, many expressed needs, variety of scales including readiness for change
- Among differences of potential concern:
 - ◆ Race (SVORI more likely black; confounded with site?)
 - ◆ Time served (SVORI longer. Is this a selection artifact? Individuals not selected for SVORI because time remaining too short?)
- Substantial differences in reported services received (consistent with PD reports that SVORI participants were receiving more) but levels are far less than 100%

Impact Evaluation: Next Steps

- Continue data collection, including concluding baseline data collection and fielding the 15-month interview
- Continue to assess service delivery
- Examine treatment needs matching
- Acquire administrative data from sites
- Conduct attrition analyses
- Analyze 3-month follow-up data focusing on intermediate outcomes
- Recidivism analyses

